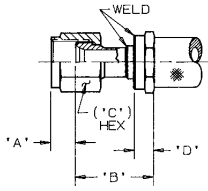


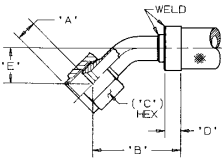
145/245 Series Flared Fittings



STRAIGHT

Flared Fittings - mates with AS4395 and AS4396 (straight)

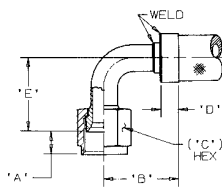
Hose	A REF	B MAX	C REF	D REF	THREAD SIZE	MATERIAL WT (LB) REF
SS						
S145/S245-4	.372	1.34	.562	.38	.4375-20	0.05
S145/S245-5	.375	1.40	.625	.38	.5000-20	0.07
S145/S245-6	.375	1.48	.688	.38	.5625-18	0.08
S145/S245-8	.438	1.58	.875	.38	.7500-16	0.13
S145/S245-10	.515	1.71	1.000	.38	.8750-14	0.18
S145/S245-12	.562	1.83	1.250	.44	1.0625-12	0.29
S145/S245-16	.620	2.02	1.500	.50	1.3125-12	0.44
S145/S245-20	.620	2.17	1.812	.56	1.6250-12	0.62
S145/S245-24	.765	2.62	2.125	.62	1.8750-12	0.97



45° ELBOW

Flared Fittings - mates with AS4395 and AS4396 (45° elbow)

Hose	A REF	B MAX	C REF	D REF	E NOM	THREAD SIZE	MATERIAL WT (LB) REF
SS							
S145/S245-4	.372	1.34	.562	.38	.347	.4375-20	0.05
S145/S245-5	.375	1.41	.625	.38	.414	.5000-20	0.07
S145/S245-6	.375	1.50	.688	.38	.471	.5625-18	0.08
S145/S245-8	.438	1.71	.875	.38	.572	.7500-16	0.13
S145/S245-10	.515	1.93	1.000	.38	.643	.8750-14	0.20
S145/S245-12	.562	2.17	1.250	.44	.680	1.0625-12	0.33
S145/S245-16	.620	2.84	1.500	.50	.790	1.3125-12	0.55
S145/S245-20	.620	3.16	1.812	.56	.930	1.6250-12	0.83
S145/S245-24	.765	3.46	2.125	.62	1.051	1.8750-12	1.12



90° ELBOW

Flared Fittings - mates with AS4395 and AS4396 (90° elbow)

Hose	A REF	B MAX	C REF	D REF	E NOM	THREAD SIZE	MATERIAL WT (LB) REF
SS							
S145/S245-4	.372	1.13	.562	.38	.642	.4375-20	0.05
S145/S245-5	.375	1.18	.625	.38	.773	.5000-20	0.07
S145/S245-6	.375	1.24	.688	.38	.890	.5625-18	0.09
S145/S245-8	.438	1.42	.875	.38	1.107	.7500-16	0.14
S145/S245-10	.515	1.64	1.000	.38	1.281	.8750-14	0.22
S145/S245-12	.562	1.92	1.250	.44	1.405	1.0625-12	0.33
S145/S245-16	.620	2.62	1.500	.50	1.708	1.3125-12	0.61
S145/S245-20	.620	2.95	1.812	.56	2.050	1.6250-12	0.84
S145/S245-24	.765	3.28	2.125	.62	2.370	1.8750-12	1.15